



WATERPROOFING REHABILITATION & PROTECTION OF INFRASTRUCTURES

Corrosion resistant systems and coatings | Concrete repair mortars
Polyurethane injection | Sidewalk repair mortars | Asphalt patching
FRP reinforcement systems

MUNICIPAL

WASTEWATER REPAIR AND PROTECTION SYSTEMS

SUBSTRATE RESURFACER F-121

HIGH STRENGTH SUBSTRATE REPAIR MATERIAL

Specified for municipal wastewater environments where structural integrity needs to be restored.

SubstrateResurfacer No. F-121 by Sauereisen is a high strength substrate repair material and waterproofing barrier for prevention of inflow and infiltration in concrete or brick manholes.

Manholes

Wet wells

Lift and pump stations

Subterranean structures

COVERAGE

12 L (0.423 pi³) per bag

3.7 m² (40 pi²) per bag at 3mm (1/8") thickness

1.85 m² (20 pi²) per bag at 6mm (1/4") thickness

PACKAGING

22.7kg bags



CHIMNEY SEAL No. F-88

ELASTOMERIC LINING COMPOSED OF FIBER REINFORCED, ASPHALT-MODIFIED URETHANE

Used as a chemical-resistant membrane or gasket seal for the prevention of water infiltration.

Sauereisen Manhole ChimneySeal No. F-88 is an elastomeric lining composed of fiber-reinforced, asphalt-modified urethane. Manhole ChimneySeal has excellent adhesion to most substrates. As a high solids elastomer, it is recommended when movement from temperature change or other causes will be encountered. Manhole ChimneySeal maintains excellent elasticity and adhesion over a temperature range of -30°F to 250°F. The flexible barrier resists freeze/thaw stresses and movement. When subjected to mechanical stress, the lining has nearly 100% recovery. Manhole ChimneySeal also resists alkalies, salts and acid.

Elastomeric membrane or joint sealant material for manhole chimney sections.

COVERAGE

12.8 ft² (1.19 m²) at thickness of 1/8" (125mils) per 1 gal unit.

Coverage will vary according to site conditions and substrate irregularities.

PACKAGING

3.78 (1 gal) units



SEWERSEAL F-170

CALCIUM ALUMINATE MORTAR FOR STRUCTURAL SUBSTRATE REPAIRS

Sauereisen SewerSeal No. F-170 is a high strength, corrosion-resistant cementitious resurfacing and water infiltration barrier for application in wastewater structures. It is a calcium aluminate based product that will stop water infiltration.

COVERAGE

Each 22.7kg (50 lb) bag when mixed with 2.3 to 2.4 L (0.60 to 0.63 gal) of clean potable water will yield 12L (0.42 ft³) and will cover approximately 1m² (11 ft²) at a thickness of 12mm (1/2").

PACKAGING

22.7kg bags



SEWERGARD 210X

SPRAYED EPOXY

Sauereisen SewerGard® No. 210X is a protective lining specifically formulated for municipal wastewater environments. SewerGard™ No. 210X provides a chemical-resistant barrier for concrete, masonry, brick, and steel substrates.

Applications range from manholes and lift stations within the collection systems to tankage, structural steel, digesters, clarifiers, and secondary containment at treatment plants.

COVERAGE

Maximum recommended thickness is 65 mils per coat

12.8ft² per gallon at 125 mils

PACKAGING

1-Gallon unit, 3- Gallon (Regular) unit and 15-Gallon (Large) unit. Bulk Unit (200 Gallons) available by request.



RESTOKRETE 209

FILLER COMPOUND

Sauereisen RestoKrete™ Filler Compound No. 209 is an epoxy formulation specifically designed to fill voids, irregularities, and air pockets in concrete and steel. The filler compound provides a smooth surface for the application of epoxy monolithics. No. 209 is not compatible with vinyl ester topcoats. The No. 209FS is a faster setting formulation.

Fills and seals irregularities in concrete, steel and brick substrates.

Suitable for application over damp or dry concrete surfaces.

Easy to apply.

Quick set time.

COVERAGE

RestoKrete™ No. 209 Regular Unit: 680 ft² per unit at 1 mil thick.

No. 209 Large Unit: 3,876 ft² per unit at 1 mil thick.

No. 209FS: 136 ft² per unit at 1 mil thick.

PACKAGING

No. 209 (Regular Unit) 5 pound unit,

No. 209 (Large Unit) 28.5 pound unit, No. 209FS 1 pound unit



CONCRETE AND REPAIR MORTARS



SOLHYDCRETE SCC-06/10

**HIGH PERFORMANCE SELF COMPACTING CONCRETE
REPAIR MATERIAL**

**Used for partial or full depth repair of concrete slabs, beams,
columns, soffits and walls.**

SOLHYDCRETE S.C.C.-10 is a high performance self-compacting concrete that offers prolonged working time and improved placeability to produce a permanent repair of concrete. SOLHYDCRETE S.C.C.-10 is dimensionally stable and forms an integral bond with the existing concrete to restore its structural integrity. SOLHYDCRETE S.C.C.-10 can be placed at thicknesses ranging from 25 mm to 450 mm.

Parking garages, balconies, walkways, elevated slabs and slabs on grade
Bridges and overpass repairs

Structural repairs for tunnels and dams

Industrial plants

COVERAGE

SOLHYDCRETE S.C.C.-10, is packaged in 25 kg (55 lbs) bags that yield 13 L (0.46 ft³) when mixed with 2.6 liters of clean, potable water.

PACKAGING

25 kg (55 lbs) bag

SOLHYDPLUG

**VERY FAST SETTING REPAIR MORTAR FOR STOPPING ACTIVE
WATER LEAKS**

**Used to stop active water leaks and to seal cracks to enable crack
injection work.**

SOLHYDPLUG is a very fast setting repair mortar specially formulated to plug and stop active water leaks and to repair concrete structures. SOLHYDPLUG is also used for sealing cracks and for setting injection ports for concrete injection work.

Plug water leaks in concrete walls or structures

Repairs to prefabricated concrete pipes and structures

Plug leaks and perform substrate repairs in pipes and manholes

Fast repairs and return to service of water treatment infrastructure

COVERAGE

SOLHYDPLUG is packaged in 22.7kg (50 lbs) bags or pails that yield a volume of approximately 12 L (0.42 ft³) when mixed with potable water. Each bag will cover approx. 1m² (11 ft²) at a thickness of 10mm.

PACKAGING

22.7kg (50lbs) bags or pails

CONCRETE AND REPAIR MORTARS

STRUCTUROC H

HIGH STRENGTH RAPID SETTING MORTAR FOR HORIZONTAL REPAIRS

Repair of spalled and damaged concrete floors due to wear, abrasion, temperature and other damage factors.

STRUCTUROC H is a rapid setting, high early strength repair mortar that produces a fast, permanent repair of concrete. STRUCTUROC H is dimensionally stable, shrinkage and crack resistant and forms an integral bond with the existing concrete to restore its structural integrity. STRUCTUROC H is designed for horizontal repairs and can be placed at thicknesses ranging from 12.5 mm (1/2") up to 300 mm (12") in a single lift. This product can be extended with up to 50% of clean dry 10 mm (3/8") granitic or clean pea gravel aggregate to then produce a rapid setting concrete for repair.

Fast repair and return to service of damaged concrete floors

Fast repair and return to service of concrete bases supporting equipment

Excellent resistance to wear and abrasion

Rapid and early strength

No bonding agent required

Excellent bond strength

Repair and creation of concrete slopes, drains and trenches

Repair of walls, bases and columns

Can be overcoated within 6 hours after placement

Freeze/Thaw resistant

Meets or exceeds ASTM C928/C928M-09

COVERAGE

Covers approximately 0.93 m² (10 ft²) per bag at a thickness of 12.5 mm (1/2")



STRUCTUROC V

HIGH STRENGTH RAPID SETTING MORTAR FOR VERTICAL REPAIRS

All vertical or overhead repairs.

STRUCTUROC-V is a cement based, one component, polymer modified, high strength, shrinkage compensated rapid setting repair mortar. It is designed for vertical and overhead concrete repairs to produce superior bond, tensile and flexural strength. STRUCTUROC V is able to be placed and sculpted to proper shape in one operation for thicknesses from 5 mm (1/4") to 50 mm (2").

Bridges, viaducts and tunnels

Parapets, columns and beams repairs

Single component

Tenacious bond strength

High early and ultimate compressive and flexural strength

Rapid setting

Can be overcoated within 8 hours after placement

Easily applied with a trowel

COVERAGE

Covers approximately 2.0 m² (22 ft²) per bag at a thickness of 6 mm (1/4")

PACKAGING

22.7 kg (50 lbs) bag



POLYURETHANE INJECTION



HYDRO GEL™ SX

WATER-ACTIVATED, FLEXIBLE POLYURETHANE FOAM OR GEL INJECTION RESIN

Crack injection to seal leaks, particularly structures subject to movement or vibration. Curtain grouting manholes to seal cracks and penetrations. Soil binding for slough control and sidewall support.

Prime Flex Hydro Gel SX is a versatile, easy-to-use single-component, water activated, hydrophilic polyurethane injection resin for sealing actively leaking joints and cracks in below-grade concrete structures. It forms either a closed cell, watertight foam or impermeable gel depending on the water to resin mix ratio. Cured material remains flexible and has excellent adhesion. It can also be used for soil binding for slough control. Independently tested and verified to meet NSF/ANSI Standard 61 for contact with potable water.

Manholes	Sanitary sewers
Dams	Below-grade concrete walls
Tunnels	Elevator service pits
Utility vaults	Tanks
Excavation pits	Tunneling launch pits

PACKAGING

5 gallon pail / 10 oz Single Shot cartridge (case of 20) / 1:1 Quick Mix cartridge (case of 10 includes Gel Reinforcing Agent)

POLYURETHANE INJECTION

PRIME FLEX™ 900 XLV

WATER-ACTIVATED POLYURETHANE FOAM INJECTION RESIN

This is a single-component, water-activated, hydrophilic, low viscosity, polyurethane injection resin.

Prime Flex 900 XLV is a low viscosity liquid resin that reacts with water and expands to form a closed cell, watertight foam. 900 XLV is used to seal actively leaking joints and cracks in concrete structures, particularly hairline cracks. Material is typically injected under pressure through injection ports.

Water treatment tanks

Dams

Below-grade concrete walls

Tunnels, manholes

Elevator service pits

PACKAGING

1 gallon jugs (case of 4) / 5 gallon pail / 2:1 Quick Mix cartridge (case of 10) / 10 oz Single Shot cartridge (case of 20)

PRIME FLEX™ 920

HYDROPHOBIC POLYURETHANE INJECTION RESIN

Prime Flex 920 is a single-component polyurethane injection resin used to seal gushing leaks, including wide gaps in concrete, where the structure is not subject to movement. This hydrophobic, low viscosity polyurethane reacts with water and expands to form a closed cell, watertight, rigid foam. Due to its low viscosity, 920 is also used for permeation grouting of loose soils to consolidate soil particles and increase the load-bearing capacity. (For high strength or large void filling, see Prime Flex 985.) This material requires the use of Prime Kat or Kick Fast Kat to adjust the reaction time from 4-13 seconds.

Sealing leaks and wide gaps in concrete.

Examples: - Box culverts, tunnels (subway, water, utility, etc.)
- Manholes, sanitary and storm pipes/structures

Curtain grouting below-grade structures.

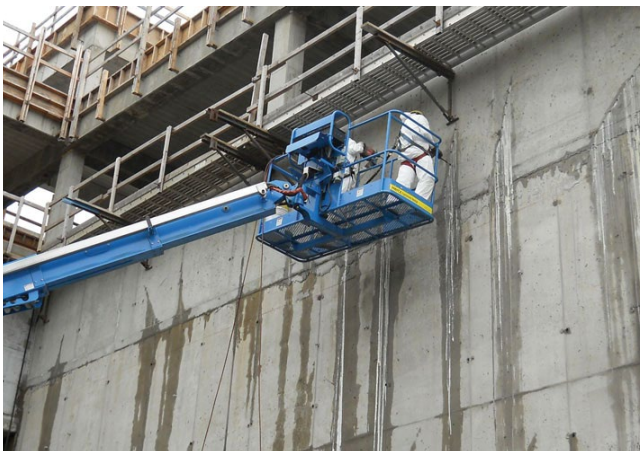
Examples: - Parking decks
- Foundations and basements

Permeation grouting for soil stabilization.

Examples: - Roads and highways
- Seawalls and retaining walls
- Sinkhole perimeters (not filling the sinkhole--see 985)

PACKAGING

5 gallon pails / 50 gallon drum / 300 gallon tote / 10:1 Quick Mix cartridge (case of 6 with Kick Fast catalyst)



POLYURETHANE INJECTION



CHEM SEMIRIGID

MOISTURE ACTIVATED POLYURETHANE CHEMICAL GROUT SEALANT USED TO CONTROL WATER INFILTRATION IN CONCRETE

Used to stop high pressure water infiltrations and to waterproof concrete structures.

CHEM SEMIRIGID is a moisture activated polyurethane chemical grout sealant containing prepolymer isocyanates (MDI). CHEM SEMIRIGID is a single component, solvent free non toxic product which reacts with water to form a hydrophobic semi rigid and chemically resistant foam. Once the product has completed its reaction, the foam becomes a completely inert material. CHEM SEMIRIGID reacts rapidly with water and can expand up to 15 times its volume.

Bridges and tunnels

Manholes and vaults

Basement foundations

Crack and joint repairs when movement of cracks or joints is moderate

To quickly fill medium sized voids in concrete

Stopping high pressure and high volume water infiltration



COVERAGE

Yield will be a function of the temperature of the unit injected and the percentage of the accelerator used. Estimation of material required will depend on the type of structure injected. SPEC-ROC TECHNOLOGIES INC. recommends contacting an approved applicator for a more precise evaluation

PACKAGING

Resin: 20 kg (5 gal) pail

Accelerator: 900 ml (16 oz.) can of the quantities required.



SIDEWALK REPAIR MORTARS

THIN REPAIR TECHMIX SIDEWALK MORTAR

SELF-BONDING CEMENT

Tech-Mix® Self-Bonding Cement is specially formulated for repairing concrete surfaces. Repairs are resistant to freeze-thaw cycles and de-icing salt. This mortar is designed for horizontal applications requiring less than 25 mm (1") of coverage.

Indoor and outdoor uses

Restoration, repair and resurfacing of joints, tiles, sidewalks, curbs, parking areas, access ramps, concrete steps, balconies and floors, public pools, loading docks, cracks in bike paths and tennis courts, etc.

COVERAGE

Covers approximately 3 to 25 mm (1/8 to 1")

PACKAGING

20 kg bags and 5 kg and 10 kg pails



THICK REPAIR TECHMIX SIDEWALK MORTAR

FAST-SETTING MORTAR

Tech-Mix® Repair-Mix® is a fast-setting mortar consisting of a stable blend of cement, sand, latex base polymer and other additives. It is designed for horizontal applications requiring coverage greater than 25 mm (1").

Repairing concrete sidewalks, curbs, driveway entrances, road joints and loading docks

Concrete stairs, balconies, floors, tiles, low walls, pools, parking areas, access ramps and manholes

Bridge decks, marine structures

COVERAGE

Covers approximately 12 to 300 mm (1/2 to 12")

PACKAGING

20 kg bags



ASPHALT REPAIR MORTARS



TOP-MIX

HIGH PERFORMANCE COLD MIX ASPHALT

Top-Mix® by Tech-Mix® is stable, high performance cold mix asphalt. Offers good workability at low temperatures and outstanding bond in damp conditions. Top-Mix® is composed of more than 75% reclaimed materials.

Repairing potholes, trenches and curbs

Maintenance of indoor and outdoor parking areas

Winter and wet weather repairs

COVERAGE

Covers approximately 0.008 m³ (0.283 ft³) per 22.7 kg bag and 0.011 m³ (0.374 ft³) per 30 kg bag

Covers approximately 0.160 m² (1.73 ft²) per 22.7 kg bag and 0.212 m² (2.28 ft²) per 30 kg bag for a hole with a depth of 5 cm (2")

PACKAGING

22.7 kg and 30 kg bulk or bags



CARBON FIBER REINFORCEMENTS

V2 T-BISCUITS

CUSTOM CARBON/GLASS FIBER REINFORCED PLASTIC LAMINATES

CFRP Tee Joint Biscuits are custom carbon/glass fiber reinforced plastic laminates designed to repair failed flange-to-flange shear connectors of pre-cast double Tee beams. A specially engineered tri-axial carbon fabric is used provide high strength, while a proprietary textured glass fabric is bonded on the exterior face to provide additional toughness as well as a rough bonding surface. The constituent resin matrix is a toughened vinyl ester with proven ability to provide strength along with superior chemical resistance, especially to salt and gasoline. Using a proprietary aerospace composite manufacturing technique, the fabric and resin are combined to form a finished composite laminate. This laminate is then cut to shape using ultra high-pressure water jet cutting equipment.

- Easy and fast installation
- Minimal disruption to operations
- Superior strength and toughness
- Chemical resistant



V2 CFRP

CARBON FIBER SYSTEM FOR STRUCTURAL STRENGTHENING

V2 CFRP is a heavy-duty strengthening system for reinforced concrete and timber. It consists of two components: V2 Biscuit Bond Paste for bonding reinforcement and V2 CFRP laminates.

The V2 CFRP system can be used to strengthen reinforced concrete and timber structures that are weakened by:

- Load increases
- Damage to structural parts
- A change in previously used structural system
- Design or construction defects

STRUCTUREWRAP™ V2 190 UC

CARBON FIBER FABRIC FOR STRUCTURAL STRENGTHENING

StructureWrap V2 190 UC is a proprietary high tensile strength, stitch bonded, unidirectional carbon fiber fabric certified by ICC-ES as meeting building code requirements. The material is combined in the field utilizing StructureWrap V2 200 Epoxy to form a carbon fiber reinforced polymer (CFRP) laminate used to strengthen and/or upgrade structural elements.

- Structural capacity changes
- Seismic retrofitting
- Blast resistant upgrades
- Structural damage and repair



SPEC-ROC TECHNOLOGIES

158 Fife Rd, unit 22, Guelph, Ontario N1H 0B2

905 749 3198 | inquiries@specroc.ca

295 Leroux, Chelmsford, Ontario P0M 1L0